

VECMOCON

ENGINEERED FOR INTELLIGENCE

CHARGER 900W SPEC SHEET



CHARGER-900W



PFC-LLC topology			
Platform	750W - 900W	1 kW - 1.5 kW	2 kW - 3 kW
Ratings	Upto 15A	Upto 25A	Uptp 50A
Applications	2 - W	3 - W	3W, LCV, OHV

Software defined Charger, IP67 certified Hardware and compute with features:

- AIS 156 Phase 2 Compliant
- PFC-LLC topology
- Pre-charge Function to improve battery life, detect over-discharge condition of the battery
- Soft start functions every time the charger is connected for charging

Capability to fulfil OEM Functional Safety ISO 26262 goals ensuring:

- Passenger safety
- Prevent costly recalls
- Enhance reliability and longevity

Capability to comply with Cybersecurity specifications as per OEM security goals to:

- Mitigate unforeseen Cyber risks
- Passenger security
- Vehicle and User Data integrity
- Enhanced reliability and trust

CHARGER-900W

POWER

Parameter	Specifications
Topology	PFC + LLC
Maximum Output Power	900 W
Maximum Output Current	15 A
Maximum DC Output Voltage	84 V \pm 0.5V
Minimum DC Output Voltage	35 V \pm 0.5V
Operational AC Input Voltage	230 VAC
AC Input Voltage Range	140 VAC - 275 VAC
Power Factor	> 0.99
Efficiency at Full Load (Efficiency calculated at charger terminals)	92%
Operational AC Input Current	6 A
AC Frequency Range	45 Hz - 55 Hz
Total Harmonic Distortion	< 3%
Communication	CAN 2.0B
Bootloader	CAN based
Indication	Visual indication
AIS156 Phase 2	Compliant

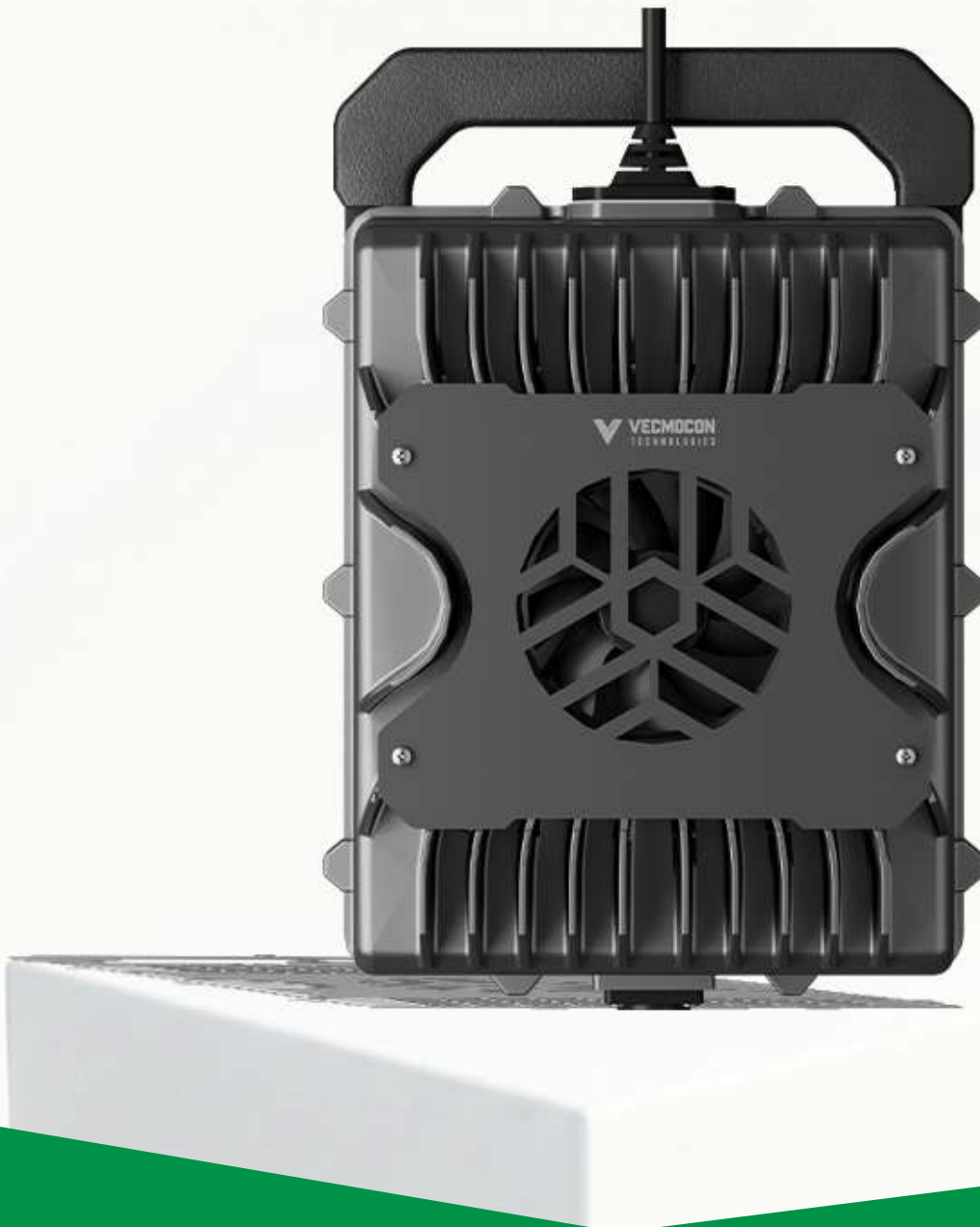
MECHANICAL SPECIFICATIONS

Parameter	Specifications
Ingress protection	IP67
Length	200 mm
Width	118 mm
Height	78 mm
Weight	2.5 kg
Casing Material	ADC12 Aluminium
Operating Temperature	-10 to 50 C
Cooling	Natural Air Cooling/Forced Fan Cooling

VECMOCON

ENGINEERED FOR INTELLIGENCE

CHARGER 1.5kW SPEC SHEET



*Actual product may vary from the image shown

vecmocon.com

CHARGER-1.5kW



PFC-LLC topology			
Platform	700W - 950W	1 kW - 1.5 kW	2 kW - 3 kW
Ratings	Upto 15A	Upto 25A	Upto 50A
Applications	2 - W	3 - W	3W, LCV, OHV

Software defined Charger, IP67 certified Hardware and compute with features:

- AIS 156 Phase 2 Compliant
- PFC-LLC topology
- Pre-charge Function to improve battery life, detect over-discharge condition of the battery
- Soft start functions every time the charger is connected for charging
- LED indicator & Seven Segment display for battery status, charging, error, and fault indication

Capability to fulfil OEM Functional Safety ISO 26262 goals ensuring:

- Passenger safety
- Prevent costly recalls
- Enhance reliability and longevity

Capability to comply with Cybersecurity specifications as per OEM security goals to:

- Mitigate unforeseen Cyber risks
- Passenger security
- Vehicle and User Data integrity
- Enhanced reliability and trust

CHARGER-1.5kW

TECHNICAL SPECIFICATIONS

Parameter	Specifications
Topology	PFC + LLC
Maximum Output Power	1500 W
Maximum Output Current	25 A
Maximum DC Output Voltage	84 V
Minimum DC Output Voltage	35 V
Operational AC Input Voltage	230 VAC
AC Input Voltage Range	140 VAC - 275 VAC
Power Factor	> 0.99
Efficiency (at Full Load)	92%
Operational AC Input Current	8 A
AC Frequency Range	45 Hz - 55 Hz
Total Harmonic Distortion	3%
Communication	CAN 2.0B
Bootloader	CAN based
Indication	Audio visual indication
Data logging	Yes
AIS156 Phase 2	Compliant

MECHANICAL SPECIFICATIONS

Parameter	Specifications
Ingress protection	IP67
Length	237 mm
Width	207 mm
Height	105 mm
Weight	4.5 kg
Casing Material	ADC12 Aluminium
Operating Temperature	-10 to 50 C
Cooling	Natural Air Cooling/Forced Fan Cooling

VECMOCON

ENGINEERED FOR INTELLIGENCE

CHARGER 3kW SPEC SHEET



CHARGER-3kW



PFC-LLC topology			
Platform	700W - 950W	1 kW - 1.5 kW	2 kW - 3 kW
Ratings	Upto 15A	Upto 25A	Upto 50A
Applications	2 - W	3 - W	3W, LCV, OHV

Software defined Charger, IP67 certified Hardware and compute with features:

- AIS 156 Phase 2 Compliant
- PFC-LLC topology
- Pre-charge Function to improve battery life, detect over-discharge condition of the battery
- Soft start functions every time the charger is connected for charging
- LED indicator & Seven Segment display for battery status, charging, error, and fault indication

Capability to fulfil OEM Functional Safety ISO 26262 goals ensuring:

- Passenger safety
- Prevent costly recalls
- Enhance reliability and longevity

Capability to comply with Cybersecurity specifications as per OEM security goals to:

- Mitigate unforeseen Cyber risks
- Passenger security
- Vehicle and User Data integrity
- Enhanced reliability and trust

CHARGER-3kW

TECHNICAL SPECIFICATIONS

Parameter	Specifications
Topology	PFC + LLC
Maximum Output Power	3000 W
Maximum Output Current	50 A
Maximum DC Output Voltage	60 V
Minimum DC Output Voltage	30 V
Nominal AC Input Voltage	220 VAC
AC Input Voltage Range	140 VAC - 275 VAC
Power Factor	> 0.99
Efficiency (at Full Load)	92%
Nominal AC Input Current	16 A
AC Frequency Range	45 Hz - 55 Hz
Total Harmonic Distortion	3%
Communication	CAN 2.0B
Bootloader	CAN based
Indication	Audio visual indication
Data logging	Yes
AIS156 Phase 2	Compliant

MECHANICAL SPECIFICATIONS

Parameter	Specifications
Ingress protection	IP67
Length	237 mm
Width	207 mm
Height	105 mm
Weight	4.7 kg
Casing Material	ADC12 Aluminium
Operating Temperature	-10 to 50 C
Cooling	Natural Air Cooling/Forced Fan Cooling