



**VECMOCON**  
TECHNOLOGIES

**VIM Lite**  
( Vehicle Intelligence Module Lite )



**DRIVEN BY INTELLIGENCE**



**i-VEC**  
DRIVE



# Features

- 4G/2G Internet connectivity (TLS 1.2)
- BLE communication 4.2
- SMS Commands
- CAN Communication 2.0B (Custom and J1939)
- GNSS (GPS + Baidu)
- GNSS based speed and distance evaluation
- Geofencing
- Secure FOTA
- Offline mode (for Power and data conservation)
- Immobilization (GPIO and CAN based)
- Lossless data transfer (onboard memory)
- Driving mode and free fall detection (6 Axis IMU)
- Backup battery
- M2M E-Sim
- 1 x analogue input
- 4 x GPIO
- IP67 Casing
- Configurable parameters
- Configuration Diagnostic and Firmware update for i-Vec

# Applications

- Electric and Hybrid 3 wheelers, motorcycles, scooters, logistic vehicles  
AGVs, Smart batteries
- Shared Mobility operations and fleet operations
- Vehicle Leasing operations
- Battery Leasing operations (BaaS)



2 & 3 Wheeler



Vehicle Leasing  
Operations.



Shared Mobility

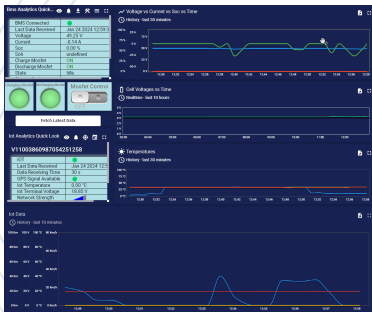


Fleet Management



Asset Tracking Solutions

# Dashboard



# Technical Specifications

Parameter	Comment	Min	Typical	Max	Unit
Supply Voltage		12	-	100	V
Operating Temperature		-25	-	+75	°C
Current		-	15*	20*	mA
CAN Speed	CAN 2.0B, SAE-J1939	-	500	-	kbps
Internet	4G/2G connectivity	-	-	8.9 <sub>(DL)</sub> /3.1 <sub>(UL)</sub>	Mbps
Data Storage	Internal Filesystem	-	-	10	kB
GSM	Quad Band GSM 850/900/1800/1900 MHz				
GNSS	Multi Constellation Support (GPS + Beu)				
BLE	Bluetooth 4.2 (compatible with i-VEC™)				
Dimensions	length X breadth X height (85 x 54 x 19) mm				