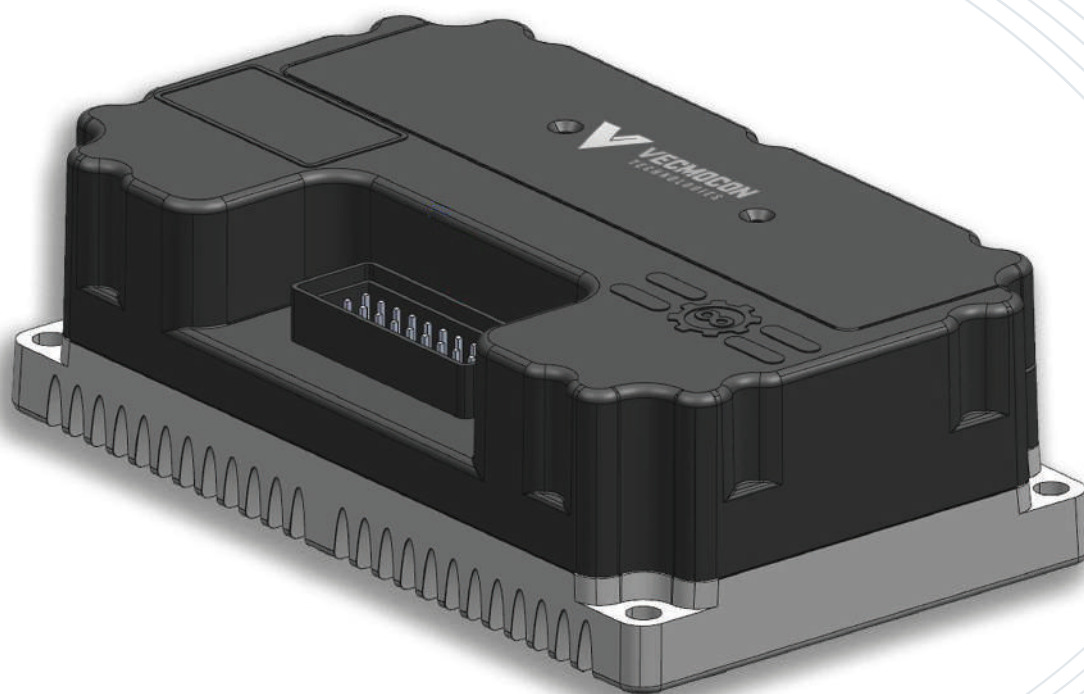




VECMOCON
TECHNOLOGIES

Motor Controller



DRIVEN BY INTELLIGENCE



i-VEC[®]
DRIVE



Description Our motor controller is a high-end high-power PMSM controller with the advantages of high quality, high efficiency, and intelligence. It is suitable for middle and high speed motorcycles with Hub motors and Chassis mounted motors. Using high-quality fully imported MOS core, EMI, EMC compliant and aluminum die heat dissipation structure, the hardware architecture and software implementation are perfectly matched and refined.

- Features**
- Monitor and configure the controller through the visual computer interface, and update and upgrade online.
 - The current at different speeds can be adjusted online.
 - The maximum speed of forward and backward economic speed can be set.
 - The overall bus current and phase current can be set.
 - The accelerator pedal threshold can be set to adjust the response sensitivity of the pedal.
 - Data and Diagnostic Code broadcast available via CAN2.0B
 - Field Oriented Control for better torque and speed control response
 - Regenerative Braking
 - Inbuilt Diagnostic Features

Technical Specifications

Parameters	Specifications
Model	S12
Input Voltage	48~72 VDC
Output	70 A
Max. Output Current	240 A
Outline Dimension	L*W*H(mm) 174*103*52
Weight of the Machine	1 KG
Overall efficiency	98%
Working temperature	-40~+85°C